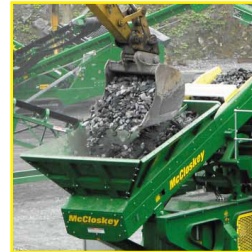


# C44

## HIGH PERFORMANCE CONE CRUSHER

Continuing with McCloskey's focus on quality components, durability and reliability, the C44 Cone Crusher adds to McCloskey's reputation for proven performance with its 44" cone and CAT C13 430hp power unit. Offering high material capacity and throughput, large stockpile capacity, and customer focused features, the C44 Cone Crusher puts McCloskey to the fore of mobile crushing plants and pushes the boundaries of industry performance.

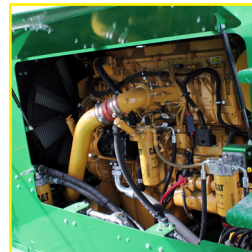
The C44 provides a high degree of control over the final product, making it the ideal portable secondary crusher.



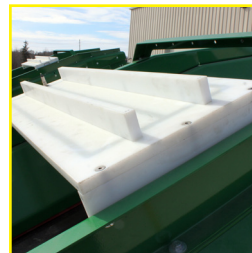
**Feeder**  
Heavy duty Hardox® steel hopper with adjustable feed via control panel, remote control or fully automatic regulation with feedback from the cone.



**Crusher**  
Built to be reliable in the toughest operating conditions, producing material ranging from 3/8" (10 mm) to 8" (203mm)



**Power Unit**  
CAT C13 430hp (320kw) engine with roomy access for maintenance. Innovative hydraulic system provides significant improvements in fuel economy.



**Metal Detector**  
A standard feature, the metal detector automatically stops the feeder when metal is detected as a way to prevent damage to the cone.



**Dynamic Adjustable Closed Side Setting (CSS)**  
Dynamic adjust-closed side setting (CSS) can be changed while operating, minimizing downtime.

[www.mccloskeyinternational.com](http://www.mccloskeyinternational.com)

McCloskey International reserves the right to make changes to the information and design of the machines on this brochure without reservation and notification to the users. Information at time of print considered accurate – McCloskey International assumes no liability resulting from errors or omissions in this document.

HARDOX is a registered trademark of SSAB Oxelösund AB.

C44

Engine: 430 hp (320 kw) CAT C13 Diesel  
Transport Height: 11' 2" (3.4m)  
Transport Length: 53' 7" (16.33m)  
Transport Width: 9' 6" (2.9m)  
Stockpile Height: 13' 10" (4210mm)  
Weight: 97,444 lbs (44,200 kg)

**C44**  
**HIGH PERFORMANCE**  
**CONE CRUSHER**